

A REQUEST FOR PROPOSAL FOR PERSONAL SERVICES CONTRACT

Department of Highways Professional Services Procurement Bulletin 2013-08 Lawrence/New Route/12-3

This document constitutes a Request for Proposals for Personal Service Contract from qualified individuals and organizations to furnish those services as described herein for the Commonwealth of Kentucky, Department of Highways.

I. PROJECT DESCRIPTION

County – Lawrence

Route – New Route

Item No. – 12-3.00

Project Description – Construct a new roadway to connect KY 3215 and KY 1185 at Yatesville

II. PROJECT INFORMATION

Project Manager – Ron Slone

User Division – Highway Design

Approximate Fee – \$900,000 (Lump Sum)

Project Funding – State Funds (SPP)

Project Length – 2.5 miles

III. PURPOSE AND NEED

Currently there is not a connection without having to leave the state park between KY 3215 (Yatesville Lake Campground) and KY 1185 (Yatesville Lake Marina). A distance of 15 miles is presently required to travel between the campground and marina. With a new connection, travel distance will be reduced to 2.5+/- miles and will also keep the traveler from having to leave the park.

IV. DBE REQUIREMENT

None

V. SCOPE OF WORK

The selected Consultant will be required to provide Preliminary Roadway design, including the preparation of engineering studies, identification of appropriate typical sections, identifying any utility impacts, performing drainage design, developing dependable cost estimates, conducting and preparing documents for public meetings and the Army Corps of Engineers, and preparation for approval of the appropriate environmental document depending on funding sources and Army Corps of Engineers requirements.

The selected Consultant will be required to provide engineering services to perform Final Roadway Design which may be added to the contract by contract modification when Preliminary Design is complete. Final design will include the preparation of any design studies, drainage design, right of way plans, construction plans, traffic control plans and cost estimates as necessary to provide Final Grade, Drain and Surfacing Plans for the project.

VI. SPECIAL INSTRUCTIONS

The purpose of the Design Contract is to provide Preliminary Engineering Services and Environmental Services. Final Design may be added by contract modification at a later date.

The Department may retain any of the advertised services to be performed by in-house state Forces. The Department may also re-advertise one or more sections for Final Roadway Design services and/or Structure Design.

Instructions for Response to Announcement can be found at:

<http://transportation.ky.gov/Professional-Services/Pages/Respond-to-an-Announcement.aspx>

VII. AVAILABLE STUDIES

[New Route – DNA Study – Item 12-3](#) - DNA scoping study to construct a new roadway to establish a connection between KY 3215 and KY 1185 at Yatesville Lake

[2393 - Yatesville Lake Kentucky Final Master Plan Update](#)

VIII. METHOD OF DESIGN

The selected consultant shall develop highway plans utilizing the most recent CADD Standards for Highway Plans Policy.

IX. ENVIRONMENTAL

The selected consultant will provide Environmental Services. The document type will be decided at a later date based on funding sources, Army Corps of Engineers requirements, and/or other agency directives.

X. GEOTECHNICAL SERVICES

The Selected Consultant may provide all Geotechnical Services required for the project. Geotechnical services may be negotiated and included in the original contract agreement or may be added by contract modification at the appropriate time. At any time, if the Department has the capacity to provide these services, the Department may retain the advertised geotechnical services.

XI. STRUCTURE DESIGN

Structure Design is not anticipated for Preliminary Design. For Final Design, if necessary the consultant shall do the necessary engineering services to submit to the KYTC an Advanced Situation Folder(s) for the appropriate structure(s). Structural Design of the proposed structure(s) may be added as a Contract Modification.

XII. TRAFFIC

Traffic projections and related information will be provided by the Department.

XIII. PHOTOGRAMMETRIC SERVICES

The Department will provide photogrammetry.

XIV. PREQUALIFICATION REQUIREMENTS

To respond to this project, the project team must be prequalified in the following areas by the date of this advertisement.

ROADWAY DESIGN

- Rural Roadway Design
- Surveying

STRUCTURE DESIGN

- Spans under 500 feet

GEOTECHNICAL SERVICES

- Drilling Services
- Engineering Service
- Laboratory Testing Services

ENVIRONMENTAL AQUATIC & TERRESTRIAL ECOSYSTEMS

- Fisheries
- Macro-invertebrates
- Water Quality
- Botany
- Zoology
- Wetlands

ENVIRONMENTAL ARCHAEOLOGY & OTHER SERVICES

- Prehistoric
- Historic
- Highway Noise
- Air Quality Analysis
- Socioeconomic Analysis
- Cultural Historic Analysis
- EIS Writing & Coordination

ENVIRONMENTAL & UST SERVICES

- Hazmat Preliminary Site Assessment
- UST Preliminary Site Assessment

XV. PROCUREMENT SCHEDULE

RESPONSE DATE • Wednesday, March 6, 2013 4:30 p.m. E.S.T. (Frankfort time)

1st SELECTION COMMITTEE • March 12, 2013

2nd SELECTION COMMITTEE • March 27, 2013

PRE-DESIGN CONFERENCE • April 3, 2013

TENTATIVE DEADLINE FOR CONSULTANT FEE PROPOSAL • April 17, 2013

CONTRACT NEGOTIATIONS • May 1, 2013

NOTICE TO PROCEED • June 1, 2013

XVI. PROJECT SCHEDULE

PRELIMINARY LINE AND GRADE • January 2014

JOINT INSPECTION • January 2015

RIGHT-OF-WAY UTILITY PLANS • March 2015

FINAL PLANS • April 2016

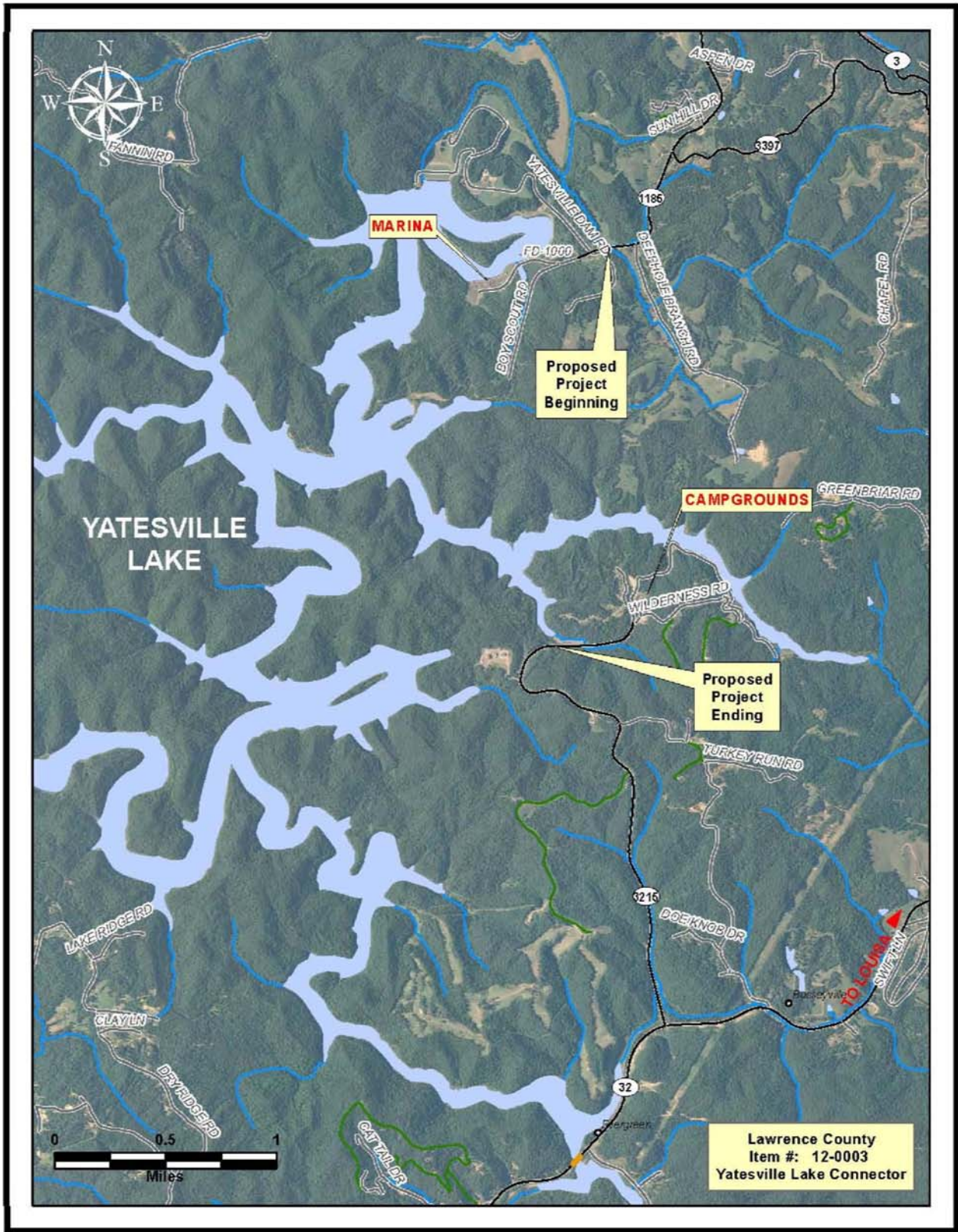
XVII. EVALUATION FACTORS

1. Relative experience of consultant personnel assigned to project team with highway projects for KYTC and/or federal, local or other state governmental agencies. (10 points)
2. Capacity to comply with project schedule. (10 points)
3. Past record of performance on project of similar type and complexity. (10 points)
4. Project approach and proposed procedures to accomplish the services for the project. (10 points)
5. Consultant's offices where work is to be performed. (2 points)

For state-funded projects, if a Selection Committee vote results in a tie between two (2) firms, one (1) of which will perform more of the work tasks in Kentucky than the other, then the former firm shall be ranked one (1) place ahead of the latter.

XVIII. SELECTION COMMITTEE MEMBERS

1. Chris James, P.E., User Division
2. Kevin Martin, P.E., User Division
3. Tim Pyles, P.E., Secretary's Pool
4. Carl Van Zee, P.E., Secretary's Pool
5. Brad Rister, P.E., Governor's Pool



Location Map



PROJECT MAP
YATESVILLE LAKE CONNECTOR
LAWRENCE COUNTY
ITEM NO. 12-0003.0
 FROM KY 3215 TO KY 1185
 Date: 2/12/2013

